

# REBHAN®

Kunststoffverpackungen

REBHAN FPS Kunststoff-Verpackungen GmbH  
Kronacher Straße 19 · D-96342 Stockheim  
E-Mail: [info@rebhan.de](mailto:info@rebhan.de)  
Telephone: +49 9265 750



[www.rebhan.de](http://www.rebhan.de)



April 2024 | Subject to change

# REBHAN®

Kunststoffverpackungen



# REBHAN – YOUR PARTNER

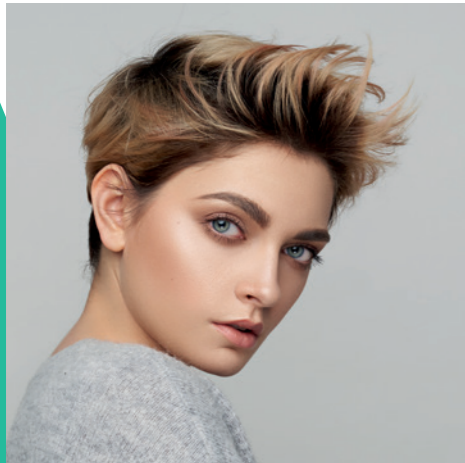
for Innovative, High-Quality and Sustainable Packaging Solutions.

As a competent specialist for **high-quality plastic packaging** made in Germany, we collaborate with numerous, internationally renowned brands from the cosmetics, parapharmaceutical and household sectors.

We offer you a wide range of high-quality standard bottles as well as **customised packaging solutions** precisely tailored to your products and requirements. We can offer inhouse solutions, that with your co-operation, will deliver really innovative ideas and individual solutions for your products. At REBHAN, we can provide everything you require out of one hand: from product-specific development and customised decoration to professional project management!

Thanks to our two subsidiaries REBHAN OPAKOWANIA (Poland) and TRASSL POLYMER SOLUTIONS (Germany), we are able to increase our production capacity and expand our range of products in the chemical sector.

REBHAN is a company of the CERTINA PACKAGING GROUP.



# CUSTOMER-SPECIFIC DEVELOPMENTS

Unique Products Need Distinctive Packaging.

Do you have a very specific packaging idea that would perfectly present your product? A flacon, bottle or roll-on with characteristic features not yet seen on the market? We are happy to accept this challenge and develop an individual approach with you.

Our **customized development process** starts with design feedback on the feasibility of your desired bottle shape, followed by the manufacturing of prototypes. After the definition of the desired material composition and with due consideration of the environmental specifications, we commence with the batch production – including the development and manufacture of your individual tooling, finishing, quality control and shipping.

Thanks to the **professional support** of our experienced experts, creating a tailor-made solution is easier than you may think.



^ More references in our blog at [rebhan.de/blog.html](https://rebhan.de/blog.html)



COLONNA GLASS-LIKE



ELIXIR GLASS-LIKE



COLONNA GLASS-LIKE



SCALA HDPE



CARISMA HDPE



COLONNA GLASS-LIKE & HDPE

# OUR STANDARD RANGE

Extraordinary Forms - Individual Configurations & Finishes.

Thanks to decades of experience in the development of plastic packaging, we can offer you a broad portfolio of high-quality standard series, which is consistently being expanded.

- > Variety of **shapes** - round, oval or square
- > Wide range of **materials** - HDPE, PET, Heavy Wall PET or glass-like PET
- > Various **recycled** materials and **biobased** alternatives
- > Different **weights** or **material mixtures** (LDPE, HDPE)
- > New range of **airless products**
- > Wide range of **volumes** - from 7.5 ml to 1,000 ml
- > Variably configurable through different **closures** and **accessories**

All standard series can be produced in the colour of your choice and finished in our inhouse decoration department. Of course, all our products are also available in sustainable materials or can be manufactured with various shares of recycled plastics.



FOAMER PET





EMOTION  
HDPE



VARIO WITH SIFTER  
HDPE



FENICE  
HDPE



ECO UP & DOWN  
AIRLESS

JUMBO  
AIRLESS

EZ AIRLESS  
AIRLESS

# AIRLESS

Environmentally conscious consumers prefer products with a **longer durability** and higher product integrity. **Hygienic dispensing, precise dosing** and the reduction of preservatives are becoming increasingly important. This is exactly where **airless packaging** comes in, revolutionizing the way products are stored and used.

Here we have compiled a small selection of our **REBHAN standard series** for you.



CARISMA  
HDPE



SMART  
PET



ROLL-ON  
GLASS-LIKE



# HEAVY WALL PET

Heavy Wall PET provides your packaging with **much higher stability and strength**. They are not only easily **recyclable** but can also be produced from even **recycled rPET** on request.

OPTIMA

COLONNA



OPTIMA  
HDPE



SOLID PP  
AIRLESS

SOLID PP  
Collar pump



COLONNA & COLONNA SLIM  
HDPE



MIRO  
HDPE



The complete REBHAN standard range, all volumes, materials and accessories can be found in our **online product catalogue**.  
Accessible at any time and from anywhere at

[catalogue.certinapackaging.com](http://catalogue.certinapackaging.com)



# GLASS-LIKE POLYMERS

An Innovative Packaging Material  
with Unique Characteristics.



REBHAN glass-like flacons impress due to their **striking resemblance to glass**: from their brilliance and typical light refraction to their absolute transparency. They convey the feel of luxury and are certain to perfectly showcase your product with their thick gauge walls and bases. In addition, glass-like products are **exceptionally robust** and **ideal for daily use** both at home and when travelling. Their extreme resilience makes them **virtually unbreakable**, and protects the contents, the customers and their surroundings.

The colouring of the glass-like products forms part of the extrusion process and the wide range of our inhouse finishing options enhance the customisation possibilities. The innovative development of recyclable polymers with molecular recyclates specifically for the extrusion blow moulding process now also allows for sustainable options.





# OUR GREEN LINE CONCEPT

We Set the Course towards Sustainability at an Early Stage.

Environmental awareness is prioritized in all company processes. We constantly implement this focus in the development of new, sustainable packaging solutions. In addition, we continuously research environmentally friendly alternatives for packaging without compromising the exclusivity of the final product.

**No matter which form of packaging you choose, we will find a sustainable way to produce it!**

- > **Recycled** materials / PCR (rPET, rHDPE, rPP)
- > **Ocean Bound** materials
- > **Biobased** materials (e.g. from tall oil or sugarcane)
- > **Molecular** recycling
- > **REFILL** solutions

The use of special, non-standard materials requires a high degree of expertise and experience. The professional and successful handling of such materials is one of our core competencies.

Learn more about our Green line concept >





# DECORATIVE FINISHINGS

Customize your Packaging.

Our wide range of decorative finishing options and many years of experience in decorating plastic packaging leave no design wishes unfulfilled.

- > **Screen printing,**
- > **Hot foil stamping,**
- > **Lacquering** (matte / glossy, special effect, gradient) or
- > **Metallisation**

are effected inhouse - you receive everything from a single source and have just one contact person.

Enhance your packaging with an extraordinary feel, texture or embossing, which we realise with tooling specifically developed for your product. Or upgrade your bottle with exceptional masterbatches such as the iridescent batch, Frost-Batch or Adflex.

Learn more about our wide range of inhouse decoration options >



METALLISATION



HOT FOIL STAMPING



STRUCTURE WITHIN THE TOOL



MATTE & GLOSSY LACQUER



SILK SCREEN PRINTING & HOT FOIL STAMPING



EMBOSSING

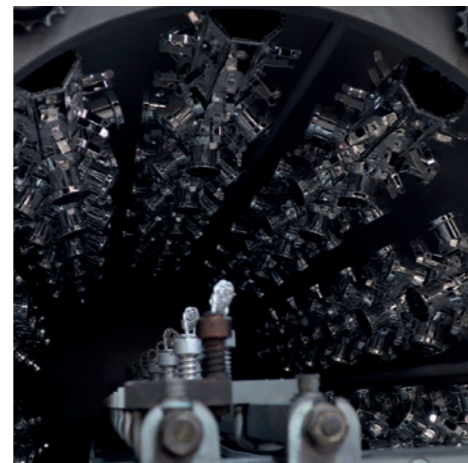
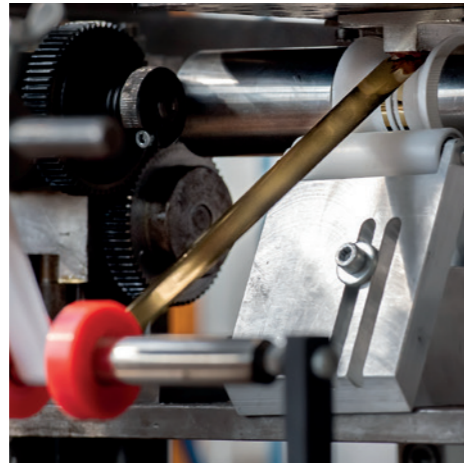
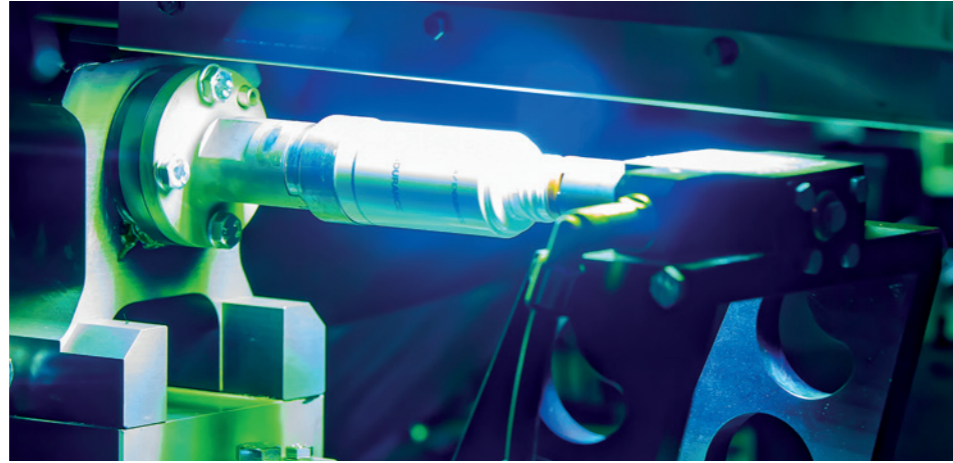
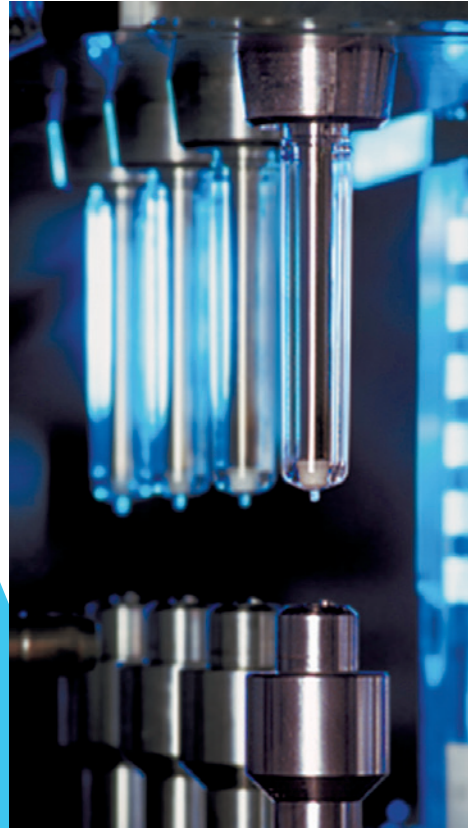


GRADIENT LACQUER



PAD PRINTING





# REBHAN TECHNOLOGIES

State-of-the-Art Technology Allows for Maximum Flexibility.

In order to process diverse types of plastics and to create exceptional packaging, we work with a wide variety of manufacturing processes and the most current machinery in our production division:

- > **Extrusion blow moulding** (EBM)
- > **Co-extrusion** (Co-EX)
- > **Injection stretch blow moulding** (ISBM)
- > **Injection blow moulding** (IBM)
- > **Injection moulding** (IM)

We prioritise the professional use of cutting-edge technologies – be it in production or decoration. To ensure consistent top quality, flexibility and efficiency, we continuously invest in our machinery pool. Recently, we have enhanced it by **two state-of-the-art five-colour screen printing machines** as well as a **coating system**.

[Learn more about our production technologies >](#)

